

LEXCOR

FLASH-TITE**CM (Curb Mount) Expansion Joint Covers****DESCRIPTION & USE**

- Flexible, insulated cover assemblies for waterproofing structural roof expansion joints
- Coverings withstand movement in three dimensions while providing an insulated, weatherproof barrier
- Compatible with all types of roofing systems

CM Expansion Joint Cover consists of four 26 ga. metal nailing strips heat fused to twin, 40 mil layers of Lexcor's time-tested "FR-40" flexible, reinforced flashing membrane. A fire retardant neoprene foam strip is bonded in the centre to help insulate the expansion joint.

CM Expansion Joint is compatible with virtually all roof membrane systems. It is used to cover structural expansion joint openings in any of the following situations:

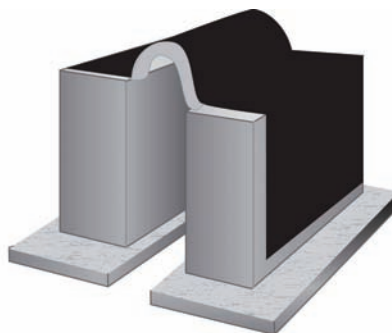
- where the roof area is larger than 45 metres (150 ft.) in any direction
- where the roof support or deck assembly change direction
- where different materials meet (i.e.: concrete to metal deck, etc.)
- horizontal to vertical expansion joints (i.e.: roof to wall)*

Lexcor has an alternative low profile expansion joint cover that does not require curb supports. For more information on this product refer to Lexcor product data bulletin no. 6.10 entitled "LP Expansion Joint Cover".

*: Lexcor has a specialized "Curb to Wall" Expansion Joint Cover where the flashing flap on one side has been removed and replaced with a wide metal nailer strip for simplified application. Refer to your Lexcor representative for further information.

FEATURES & BENEFITS

- **Proven Long-Term Durability** - Have been employed on thousands of buildings across North America for over thirty-five years



- **No Exposed Metal** - Nail heads and the metal nailing strip are covered by the flashing; there are no exposed folded metal joints that can hold and channel water
- **Part of a Complete Flashing System** - Unlike stand alone expansion joint systems, the CM Expansion Joint Cover easily ties in to Lexcor's FR-40™ perimeter flashing membrane to form a complete, comprehensive flashing system for built-up roofs
- **Minimal Field Splicing** - Standard roll lengths of 15.24 m (50') eliminate 80% of the field splices; continuous rolls up to 76.2 m (250 ft.) long are available on special order
- **Pre-fabricated Transitions Available** - Including Angles, Crossovers and Tees; special transition pieces may be custom fabricated at the factory
- **Minimal Stress on Roof Membrane** - Features a proper bellows that ensures structural expansion and contraction forces are not transferred to the roof membrane; flat expansion joint systems that rely on elastic rubber will transfer stress to the roof membrane, possibly resulting in membrane splits or tears during colder temperatures

TECHNICAL DATA**MATERIALS & PHYSICAL PROPERTIES**

BELLOWS: Twin, 40 mil layers of Lexcor FR-40™ PVC/rubber alloy reinforced with polyester scrim. FR-40™ is resistant to ozone, air pollutants, ultra-violet light and freeze-thaw cycles.

continued on back

Visit our video channels: <https://vimeo.com/channels/lexcoren>**COMMERCIAL BUILDING PRODUCTS**

Ontario & Western Canada
1.800.268.2889

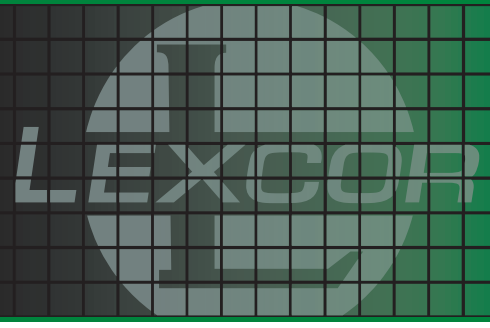


Quebec & Eastern Canada
1.800.363.2307

lexcor.net

FLASH-TITE

CM (Curb Mount) Expansion Joint Covers



Tensile Strength: 1750 psi (ASTM D412)
Tear Strength: 75 lbs (FS-191-5136)
Low Temperature Flexibility: Excel
Dimensional Stab: <5% (ASTM D1204 - shrinkage)

INSULATION: Closed cell, flame retardant Polyethylene foam, in thicknesses shown below. K-factor = 30 (ASTM C-518); R = 3.84 / in.

NAILERS: 1.5" (38 mm) wide 26 ga. galvanized steel, heat fused to the Bellows material. Aluminum, copper or stainless steel are available on special order. Outside nailers may be ordered with "peel 'n' stick" butyl sealant tape pre-applied.

SPLICING: To ensure proper, foolproof field splices every time, it is recommended that splices be hot-air welded. An easy to use "peel 'n' stick" FR-40 Splice Strip can also be used as an alternative method.

STANDARD SIZES				
Model	Structural Opening	Insulating Foam Width	Insulating Foam Thickness	Overall Width
CM-4	up to 2.5" (65 mm)	4"	3/8"	12"
CM-6	2.5" to 4" (65 to 102 mm)	6"	3/8"	14"
CM-8	4" to 5" (102 to 127 mm)	8"	5/8"	16"
CM-10	5" to 6.5" (127 to 165 mm)	10"	5/8"	18"
CM-12	6.5" to 8" (165 to 203 mm)	12"	5/8"	20"

- For pre-applied sealant on outside nailers, add the suffix "st" to the model no.
- For extra wide flashing flaps, specify the total desired width after the model no.

EXAMPLE: CM-4st/18" signifies CM-4 expansion joint with pre-applied sealant tape and 18" wide flashing flaps.

PACKAGING

Standard packaging is 50 ft. (15.24 m) rolls, complete with Splicing Strip. 100 ft. (30.48 m) and 250 ft. (76.2 m) rolls are available on special order in CM-4 and CM-6 sizes.

LIMITATIONS

- Only structurally sound wood cants and curbs are acceptable. Woods must be treated. Cants or curbs with rotting or split wood or of non-structural materials must not be used.
- Refer to Lexcor for special application instructions on coal tar pitch roofs.
- Bridges over the expansion joint must be provided in traffic areas.
- Bitumen or other unspecified adhesive substitutes are not acceptable for CM splicing or repairs.

INSTALLATION

Refer to Lexcor Technical Data Bulletin 6.20 for detailed installation instructions of Lexcor CM Expansion Joint Cover.

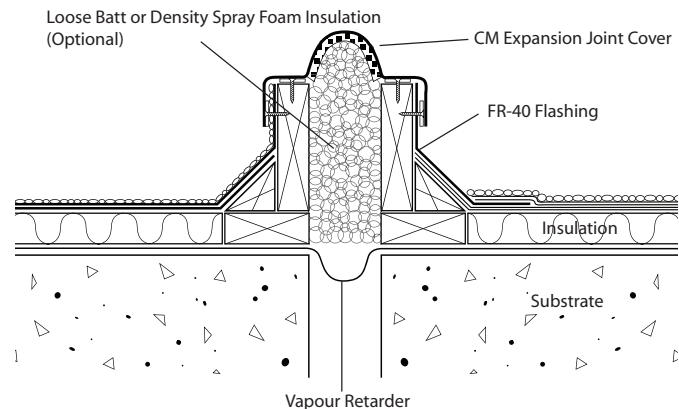
WARRANTY

This product is warranted against manufacturing defects for a period of 10 years. Product installation must be inspected by a Lexcor representative prior to warranty being issued.

SPECIFICATION

Expansion Joint Cover shall consist of a double reinforced PVC/rubber alloy weathering membrane with polyethylene foam insulated bellows, heat fused [galv. steel; aluminum; copper; stainless steel] nailer strips and an asphalt compatible flashing membrane. Expansion Joint Cover shall be supplied in minimum 50 ft. (15 m) lengths to minimize field splices and come complete with all necessary splicing materials.

ACCEPTABLE PRODUCT: Lexcor CM Expansion Joint Cover, model no.: _____, supplied by Lexcor, 1.800.268.2889. Expansion Joint Cover shall be installed in strict accordance with the manufacturer's current published installation instructions and [NRCA, CRCA] roofing guidelines.



COMMERCIAL BUILDING PRODUCTS

Ontario & Western Canada
1.800.268.2889



Quebec & Eastern Canada
1.800.363.2307