

# FLASH-TITE BT Drains

## DESCRIPTION & USE

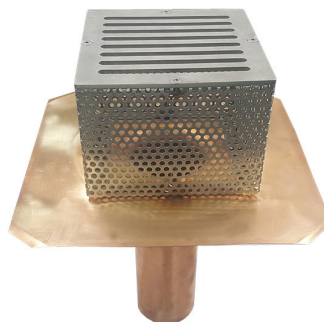
- Premium balcony / terrace drains
- Compatible with single ply, built-up or modified bitumen roofing membranes
- Available in a 'new construction' design or a 'retrofit' insert design for reroofing applications
- Available in copper and aluminum

## FEATURES & BENEFITS

- **A Flatter Flange** - Fits more "wrinkle-free" into the hopper
- **Heavy Duty Construction** - Matt finish, stainless steel plate, laser cut cover plate and strainer provide exceptional resistance to vandalism. Secured with stainless steel 1/4" bolts, the strainer design resists loss or theft. Copper hoppers are welded (versus soldered) to resist failure from high temperature roofing torches.
- **Mechanical Membrane Securement** - Mechanically fastened for the securement of the roofing membrane to the drain.
- **Separate Cover Plate & Strainer** - Can be removed for cleaning without affecting the clamping-membrane seal.
- **Full Insulating Value** - Flat, funnel-less design permits rapid drainage without compromising the full thickness of the substructure.
- **Choice of Designs** - Bodies are available in a choice of heavy gauge 2.1 mm (0.081") seamless spun aluminum hopper or 24 oz - 0.81 mm (0.032") welded copper.

## WARRANTY

This product is warranted against manufacturing defects for a period of 20 years.



## TECHNICAL DATA

### Physical Dimensions

Strainer Height:	Variable
Downspout Length:	30 cm (12")
Flange Diameter:	43 cm (17")

### DRAIN SIZES

NEW CONSTRUCTION Model No. / Drain Pipe Size	RETROFIT Model No. / Drain Pipe Size
SQDC2 - 2" for 2" Pipe	SQDC175 - 1-3/4" for 2" Pipe
SQDC3 - 3" for 3" Pipe	SQDC275 - 2-3/4" for 3" Pipe
SQDC4 - 4" for 4" Pipe	SQDC375 - 3-3/4" for 4" Pipe
SQDC6 - 6" for 6" Pipe	SQDC575 - 5-3/4" for 6" Pipe

### OPTIONS

Refer to the appropriate technical data sheet for more information:

- Drain Seal (Maxxflo is recommended)
- Under Deck Clamp
- Flow Control Insert
- Pre-fabricated Target Patch

Visit our video channel: <https://vimeo.com/channels/lexcorEN>

## COMMERCIAL BUILDING PRODUCTS

Ontario & Western Canada  
1.800.268.2889



Quebec & Atlantic Canada  
1.800.363.2307

lexcor.net

# FLASH-TITE BT Drains

# LEXCOR

## SPECIFICATION

**Spec Note:** Choose desired choice from alternative options in square brackets.

[New Construction; Retrofit] Drain hopper shall consist a [24 oz - 0.81 mm (0.032") thick spun copper hopper welded to a DWV copper downspout; 2.1 mm (0.081") seamless spun aluminum].

Flange shall be fixed with 4 clamping studs to receive strainer. Strainer shall be fabricated from matt finish, heavy duty perforated stainless steel. Strainer shall be a variable height, secured to the drain body with (4) 6 mm (1/4") single stainless steel bolts.

Drains shall be supplied with [Flow Control Insert].

Drains shall be inserted into the drain pipes as shown on the shop drawings and secured to the deck with the [Under Deck Clamp (UDC)] secured tightly to the underside of the deck. Seal the drain to the drainpipe with the appropriate size [Maxxflo Retrofit Roof Drain Seal; Flash-Tite™ Drain Seals; mechanical joint connector].

Flash the drains into the roofing system in accordance with [NRCA guidelines; CRCA guidelines; the requirements of the roof membrane manufacturer]. Install strainer over membrane and secure tightly to the flange with stainless steel nuts and washers.

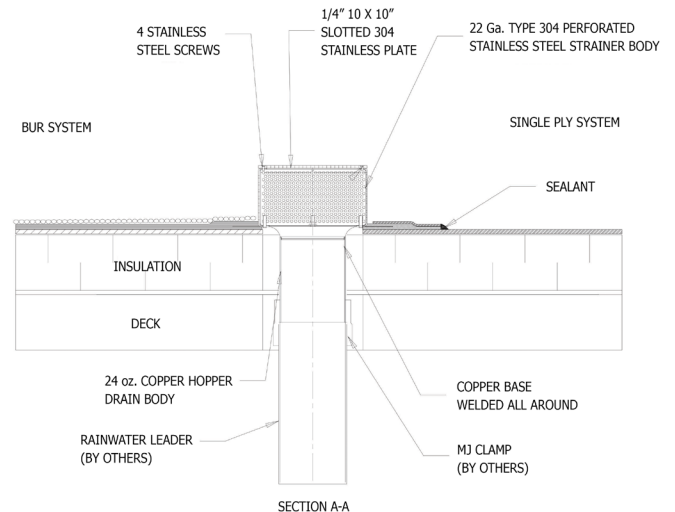
ACCEPTED PRODUCT: Flash-Tite™ BT Drain™ by Lexcor ([www.lexcor.net](http://www.lexcor.net), Tel: 800.268.2889, E-Mail: [info@lexcor.net](mailto:info@lexcor.net)).

## INSTALLATION

Install the roof membrane, cutting an appropriate sized hole through both materials over the drain pipe. If using a pipe seal, connect it to the drain downspout. Insert the drain downspout into the drainage pipe, ensuring a proper drain-to-pipe seal.

Adhere the drain hopper flange to the top of the underlying roof membrane using a membrane compatible adhesive. If desired, the drain may also be mechanically fastened to the structural deck with concrete screws. Fasten 4 screws 25 mm (1") in from the edge of the flange. Alternatively, use the Flash-Tite™ Under Deck Clamp.

Adhere appropriate membrane flashing overtop of the drain flange, bringing it up to the edge of the downspout. Apply a membrane compatible sealant along the edge of the membrane flashing. Install any drain accessories as required. Install strainer by fastening down 4 to 8 nuts (do not over tight). Tighten the strainer cover down to the strainer with the strainer retaining bolts. Complete membrane flashing detail.



## COMMERCIAL BUILDING PRODUCTS

Ontario & Western Canada  
1.800.268.2889



Quebec & Atlantic Canada  
1.800.363.2307